

SoftAway

HandPainter

pro

Version 1.7 for Palm OS

User Manual

www.SoftAway.com

Copyright © 2003 SoftAway www.SoftAway.com

Contents

Introduction	3
HandPainter-PRO at a glance	3
Browser Screen	4
<i>Toolbar Options</i>	4
Upper Toolbar – Image Management	6
Menu	6
<i>Image Menu</i>	7
<i>Edit Menu</i>	8
<i>Zoom Menu</i>	8
<i>Help Menu:</i>	9
Main Area – Work Desk	9
Lower Toolbar – Creation and editing	10
<i>Line Style Toolbox</i>	11
<i>Modify Edge Toolbox</i>	13
<i>Shapes Toolbox</i>	13
<i>Selection Toolbox</i>	15
<i>Text Toolbox</i>	16
<i>Paint Bucket Tool</i>	16
<i>Airbrush Toolbox</i>	17
<i>Eyedropper Tool</i>	17
<i>Color-Selection</i>	17
<i>Color-Bar</i>	17
Hard-Key Button Control	19
<i>Regular Hard-Key Button Control:</i>	19
<i>5-Way Navigator Control:</i>	19
Installation	19
Registration	20

Introduction

HandPainter-PRO is a powerful yet easy to use painting program for Palm devices. HandPainter-PRO features a professional drawing tool, combined with a very smart, elegant and easy to use user interface.

HandPainter-PRO is one of the fastest painting tools ever designed for Palm OS. Featuring for example an almost instant flood fill (Paint bucket tool), as well as a fast zoom operation and zoom scroll.

HandPainter-PRO is **very** small. Today as Palm applications become larger and heavier, HandPainter-PRO remains lean and takes less than 100Kb (about 200Kb in HiRes version) of your Palm device memory.

HandPainter-PRO is very powerful – featuring all the painting tools that you already know from your desktop machine. No shortcuts, no limitations. Fully operational 4 level Zoom operation, with smooth Pan for moving around, fluid fill, 4 spread width Air Brush, 12 Line Styles, Cut / Copy / Paste functions, 4 Text Styles, Geometrical Shapes, and much more...

HandPainter-PRO was designed to be user friendly and simple to use, with state-of-the-art user's interface, pop up toolbox's, and hidden color toolbar.

HandPainter-PRO at a glance

HandPainter-PRO has two work screens: the [Browser Screen](#) and the [Work Screen](#).

Browser Screen contains thumbnail view of all images and pictures. Tapping on an image will bring you to the Work Screen. The Browser Screen is used primarily as an image management tool.

Work Screen – the 'work desk' of the software. It is here, in the Work Screen, that the drawing and creation takes place. It is divided into 3 areas: the upper area – image management, the lower area – for creation and editing, and the center area – the work desk.

Browser Screen

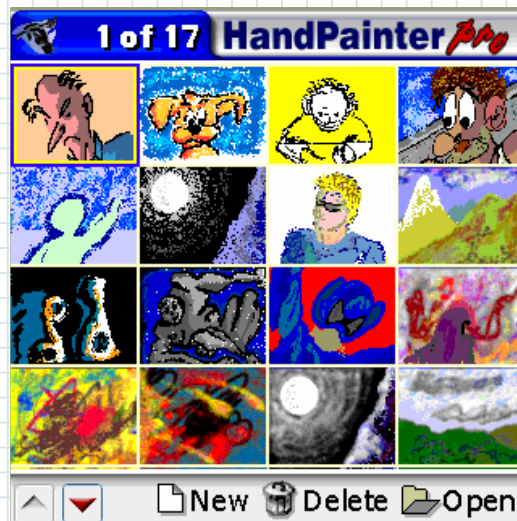


Image Selection - the thumbnails of the available images and pictures will be shown.

Toolbar – general options.

Toolbar Options



Scroll Up/Down

Allow you to browse between thumbnails, where you have many images or pictures available.

Slide show

Will commence a slide show of existing images. Tap once to cancel slide show.

New image

Will initiate a beginning of a new image.

Delete

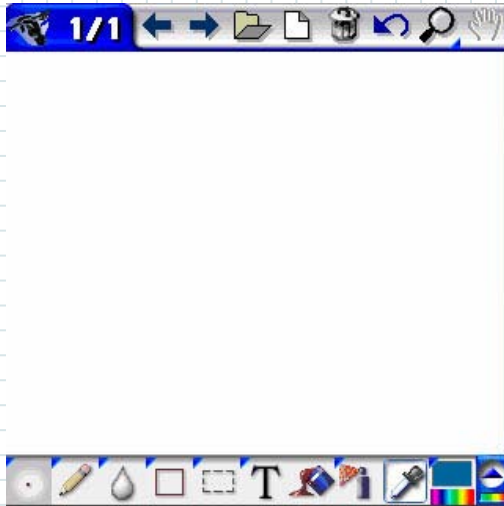
Delete selected image.

Open

Open selected image. Same as tapping on an image.

Work Screen

The work screen includes the following areas: [Main editing area](#) – the work desk, [Upper Toolbar](#) – for image management, and [Lower Toolbar](#) – for creation and editing.



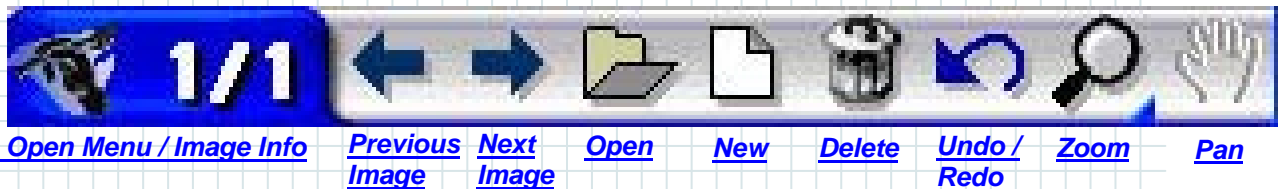
[Upper Toolbar](#) – Image management.

[Main edit area](#) - Work desk

[Lower Toolbar](#) – Creation and editing.

Upper Toolbar – Image Management

Contains the following:



Open Menu / Image Info

Tap on the blue field with the icon on the left, to open [Menu](#). This part of the toolbar also describes the image info, i.e. 1/2 means 'image 1 from a total of 2 images'.

Previous / Next Image

Allow you to browse between images.

Open

Jumps you to Browser Screen, where you can select and enter a selected image.

New

Tap once to initiate a beginning of a new image.

Delete

Selected image will be deleted.

Undo / Redo

Tap once to Redo or Undo 1 operation. Only 1 operation can be redone or undone. First tap will undo, the second will redo.

Zoom

Long tap will open the Toolbox. Short tap will activate the selected operation.



Disable Zoom

Select Zoom Level

Pan

Can be used only when in a zoomed state (otherwise – use see all the image, thus has no use for the pan tool). To use Pan, long tap and drag the image – while in a pan state.

Menu



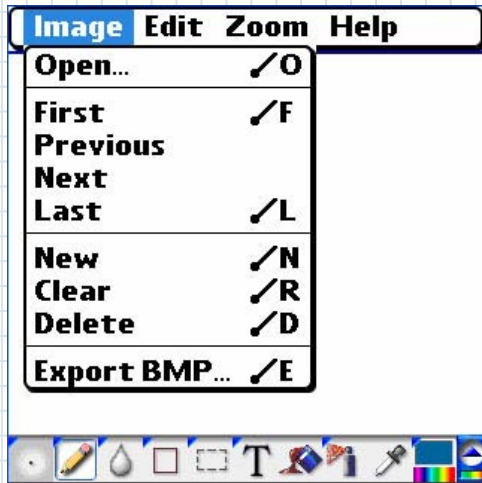
The menu option is opened by tapping on the blue-array on the left of the top toolbar.



Another way to open the menu option is by clicking the hand-held device's menu button.

The menu option contains 4 separate menus: [Image](#), [Edit](#), [Zoom](#), and [Help](#).

Image Menu



Contains the following: [Open](#), [First / Previous / Next / Last](#), [New](#), [Clear](#), [Delete](#), [Export BMP](#). Descriptions for most operations are described herein, there are however several unique operations that can only be activated here:

First / Previous / Next / Last

Allow you to browse between images. You can also jump to the first or last image, contained in your palm.

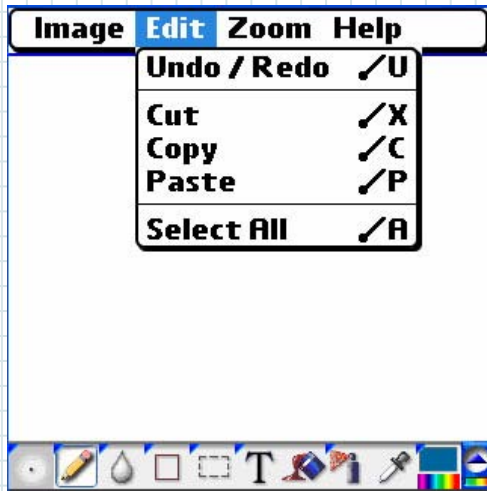
Clear

Clears all image contents, effectively erasing all but keeping the image rather than deleting it.

Export BMP

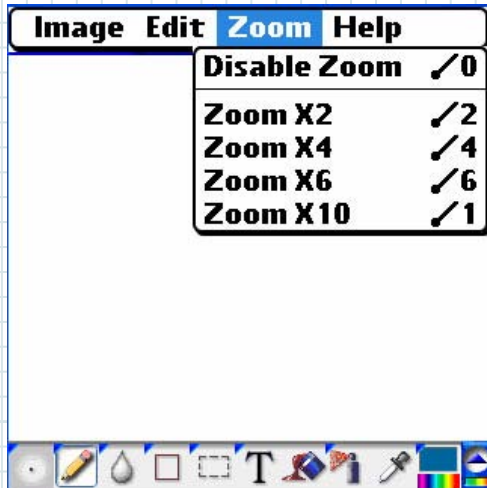
Allow you to export the image data from HandPainter-PRO format to BMP format on your extension card. BMP image format is the standard Windows image format, the Image is saved in "Palm\Programs\HandPainter-PRO" directory on the card, from there it can be beamed, sent, or transferred to your desktop with any card reader - software or hardware.

Edit Menu



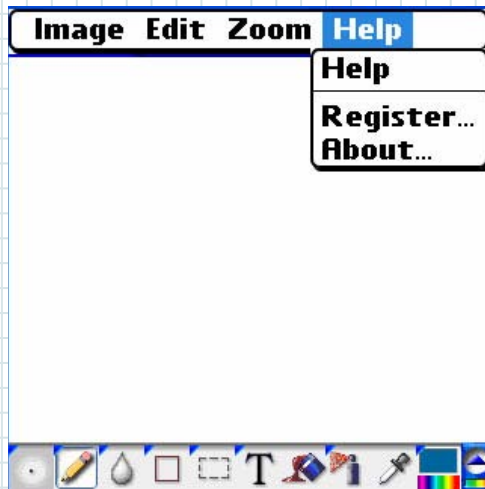
Contains the following: [Undo / Redo](#), Cut, Copy, Paste, Select All. Descriptions for those operations are described herein.

Zoom Menu



Contains the following: Disable Zoom, Zoom X2, Zoom X4, Zoom X6, Zoom X10. Descriptions for most operations are described herein.

Help Menu:



Contains the following: Help, Register, About.

Help

Will activate the HandPainter-PRO tips screen.

Register

Is used to type the Unlock Key, once full license is purchased from site. Registration will open the 14 days limitation and ensure you support and upgrading. See more details in [Registration](#) section at the end of the manual.

About

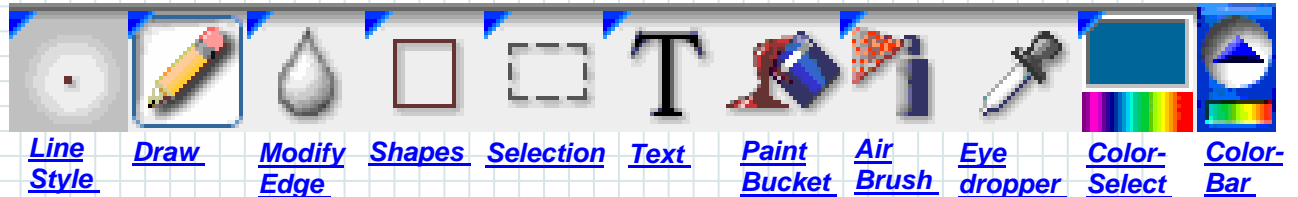
Will detail HandPainter-PRO current version on your device.

Main Area – Work Desk

This area is intuitive. All work is done in this main area of the screen. All tools and operations chosen are used in this part of the screen.

Lower Toolbar – Creation and editing


Lower Toolbar – Creation and Editing contains the following:



This part contains 8 of the toolboxes used in HandPainter-PRO. It also contains 2 tools, and finally 1 toolbar.

Few words on the differences between the above terminologies. A tool is an operation or command that is activated by short tapping on an icon representing the desired operation.

A toolbox on the other hand is a group of operations that are arrayed in a vertical row of icons. The toolbox is distinguished from the tool by a small blue rectangle on the upper-left corner of an icon. The toolbox is deployed by long tapping on the icon. After the toolbox is deployed, a short tap will select and activate a tool from the toolbox, and will also make it the default tool of the toolbox. After a certain tool is selected from the toolbox and becomes its default tool, short tap on it will activate that tool. To change the default tool again – repeat the long tapping selection.

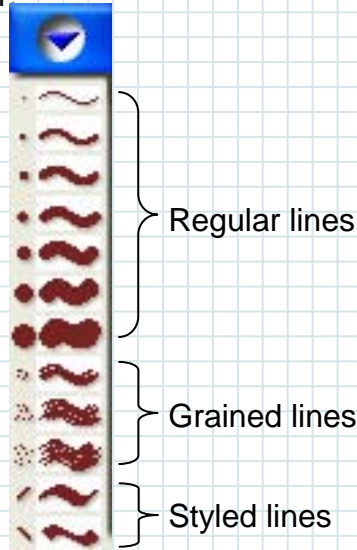
-  Finally, each toolbox contains a blue rectangle icon with a triangle in the middle. This icon will close the toolbox upon tapping, without changing the selected default tool.

A toolbar is similar in concept, only larger. Thus a toolbar is a group of toolboxes that are arrayed in a row of icons. Essentially the lower area of the screen operates like a toolbar.

This section will detail each Toolbox or Toolbar and the Tools within:

Line Style Toolbox

Line Style determines Line properties for several other tools in Hand-Painter



Line Style features 12 different lines:

7 Regular lines with differing line thickness (from fine to very thick).

3 Grained lines which are textured lines, with differing line thickness (fine to thick).

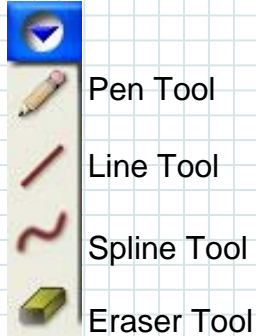
2 Styled lines which depict old writing ink pen, also with differing line thickness.

Line Style controls line properties for the following other tools:

[Pen Tool](#), [Line Tool](#), [Spline Tool](#), [Eraser Tool](#), [Blur](#) and [Sharpen](#) Tools, all [Rectangle](#), [Rounded Rectangle](#), and [Ellipse](#) Tools.

Draw Toolbox

Draw toolbox contains the following 4 tools: [Pen Tool](#), [Line Tool](#), [Spline Tool](#), [Eraser Tool](#).



Pen Tool

Pen tool allow you to create freeform lines and is the most basic and intuitive tool for drawing and sketching.

Adjust Pen thickness using the [Line Style Toolbox](#).
Pen Tool use active color as its color.

Line Tool

Line Tool is a Vector based line tool, used to create straight lines. Create a line by tapping on start point of the line, and then release the pen on the end point of the line.

Adjust line thickness using the [Line Style Toolbox](#).
Line Tool use active color as its color.

Spline Tool

Spline Tool is a Vector based line tool, used to create curved lines. Create a line by tapping on start point of the line, release the pen on the end point of the line, and then tap once more on the curve direction. This can be done up to 2 times to create a simple arc or double curve.

Adjust Spline thickness using the [Line Style Toolbox](#).
Spline Tool use active color as its color.

Eraser Tool

Eraser Tool is essentially the reverse of the [Pen Tool](#). The Eraser is used in a freeform way to allow you to erase parts of a sketch or image. Erase is always to white color.

Adjust Erase thickness using the [Line Style Toolbox](#).

Modify Edge Toolbox

Modify Edge Toolbox contains the following 2 tools:
[Blur Tool](#), [Sharpen Tool](#). Use this toolbox to make modifications to the image finish.



Blur Tool

Blur Tool is used to soften or smudge hard edges or parts of an image. To use the Blur Tool simply drag the pen on the areas you want to blur.

Adjust Blur area thickness using the 7 regular line types of the [Line Style Toolbox](#).

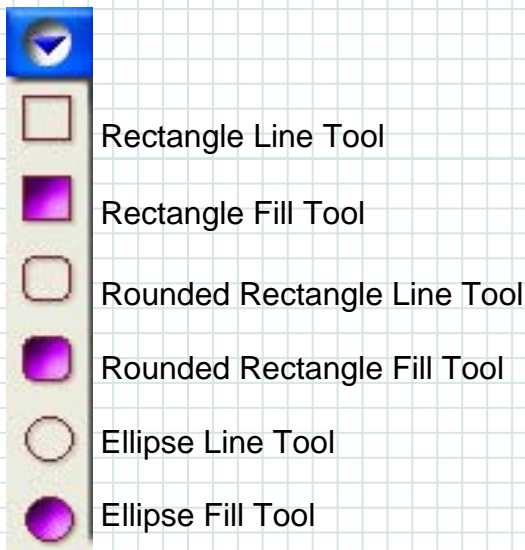
Sharpen Tool

Sharpen Tool is used to focus soft or blurred edges or parts of an image. To use the Sharpen Tool simply drag the pen on the areas you want to Sharpen.

Adjust Sharpness area thickness using the 7 regular line types of the [Line Style Toolbox](#).

Shapes Toolbox

Shapes toolbox contains the following 6 tools:



Rectangle Line Tool

Rectangle Tool is essentially a very strait forward tool. Simply tap on the first corner of the rectangle, then drug to the opposite point.

The rectangle is transparent with active color only on the edges.

Adjust edge thickness using the [Line Style Toolbox](#) (note: if you use any line other then regular line type – line will be regular line).

Rectangle Fill Tool

Rectangle Fill Tool is used to fill rectangular areas with color. Simply tap on the first corner of the rectangle, then drug to the opposite point.

The rectangle as well as its edge is filled with active color.

Adjust edge thickness using the [Line Style Toolbox](#) (note: if you use any line other then regular line type – line will be regular line).

Rounded Rectangle Line Tool

Rounded Rectangle Tool is similar to Rectangle Tool. Simply tap on the first corner of the rectangle, then drug to the opposite point.

The Rounded rectangle is transparent with active color only on the edges.

Adjust edge thickness using the [Line Style Toolbox](#) (note: if you use any line other then regular line type – line will be regular line).

Rounded Rectangle Fill Tool

Rounded Rectangle Fill Tool is used to fill areas with color. Simply tap on the first corner of the rectangle, then drug to the opposite point.

The Rounded rectangle as well as its edge is filled with active color.

Adjust edge thickness using the [Line Style Toolbox](#) (note: if you use any line other then regular line type – line will be regular line).

Ellipse Line Tool

Ellipse Tool is similar to Rectangle Tool. Simply tap on the first corner of the ellipse, then drug to the end point, creating an ellipse shape that can also be a circle.

The Ellipse is transparent with active color only on the edges.

Adjust edge thickness using the [Line Style Toolbox](#) (note: if you use any line other then regular line type – line will be regular line).

Ellipse Fill Tool

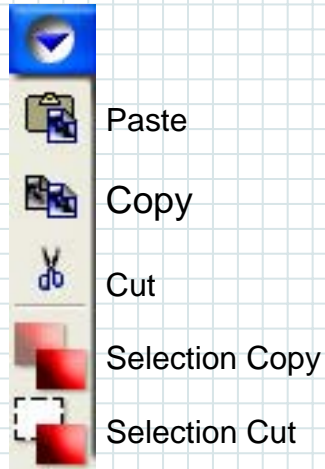
Ellipse Fill Tool is used to fill areas with color. Simply tap on the first corner of the ellipse, then drug to the end point.

The Ellipse as well as its edge is filled with active color.

Adjust edge thickness using the [Line Style Toolbox](#) (note: if you use any line other then regular line type – line will be regular line).

Selection Toolbox

Selection Toolbox contains the following tools: Cut / Copy / Paste, Selection Copy / Selection Cut.



The Selection Tool is used to perform Cut / Copy / Paste operations on an area determined by the marquee (which is a rectangular dashed boundary). To define the area to be manipulated, simply tap on start point of the boundary, then drag to end point. To Cut or Copy just drag the area that is marked by the boundary.

The operation can be either Selection Copy or Selection Cut. To alternate between them use the icons on the lower ends of Selection Toolbox.

You can also enlarge or minimize the selected area by long tapping and dragging the selected boundary.

Text Toolbox

Text Toolbox is a one-line word processor. The Text Toolbox has 4 types of text available: Regular Small, Bold Small, Regular Large, Bold Large.



Active color is the text color. Change text color with [Color-Selection](#) or [Color-Bar](#).

Paint Bucket Tool

Paint Bucket Tool is used to fill areas with active color. To use Paint Bucket, tap on any enclosed area. Paint Bucket will fill **all** enclosed area on which you tapped.

Note: if drawing has no defined edges, Paint Bucket will fill everything.

Color is active color. Change color with [Color-Selection](#) or [Color-Bar](#)



Airbrush Toolbox

Airbrush Toolbox is used to spray color in a freeform.



Airbrush features a full gradient of flow thickness, and also 4 Grades of spread radius (from tight to wide radius). Long tap to drag the flow thickness, and short tap to choose spread radius.

Color is active color. Change color with [Color-Selection](#) or [Color-Bar](#).



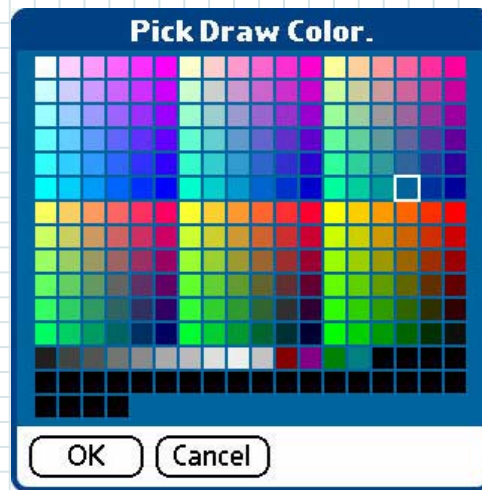
Eyedropper Tool

Eyedropper Tool is used to sample and select a color from the drawing. To use Eyedropper tap on the point color you wish to sample. That point sample immediately turns into your active color.



Color-Selection

A drawing always has 1 active color. Color-Selection is used to control or change active color.



Short tapping on Color-Select Tool opens the 256-color table, from which you are able to pick and change your active color.



Color-Bar

The Color-Bar is an active popping bar used to enable the user fast access to 16 colors that are predetermined by default, but can also be customized by the user to fit his need.



To use the Color-Bar simply tap on the icon. The Toolbar will popup from the right, where you can then short tap on a color to select and make it your active color.

Second tap on the icon will hide the Color-Bar

A long tap on one of the 16 colors will open the Color-Selection, enabling a new choice of color for the Bar.

Hard-Key Button Control

Use Hard-Key Button control in HandPainter-PRO as follows:

Regular Hard-Key Button Control:

In Zoom mode (during usage of Zoom Tool) use buttons to scroll around: Up / Down buttons to scroll up and down, Address / ToDo for scrolling left and right (respectively).

In non-Zoom mode (any other time) use Up / Down as [Previous Image / Next Image](#) Tools.

5-Way Navigator Control:

Use "select" to zoom-in zoom-out (alternating between the Zoom Levels).

In Zoom mode (during usage of Zoom Tool) you can scroll around with the navigator.

In none-zoom mode use navigator for [Previous Image / Next Image](#) Tools.

In [Browser Screen](#) use navigator to select image. Use select to open the selected image.

Installation

To install the program just copy it to your handheld device
"HandPainterPro.prc" file - for pre OS5 device, or
"HandPainterPro_HiRes.prc" for OS5 HiRes palm device.

Registration

HandPainter-Pro is a shareware. It is given to you for 14 days evaluation period in full-functioning Trial mode. After the trial period is over, to continue using the software, you must purchase it. To order the software, please return to:

www.SoftAway.com

After purchasing, you will receive a registration-key according to your Palm user name (HotSync ID). If you're not sure what your user name is, you can see it in the register-dialog of HandPainter-PRO software.



If you have any comment, suggestions, bug report, let us know at:

Support@SoftAway.com

